

Prescription Mapping Service

Boundary & Variable Rate

Service includes:

- Spectrum analysis for single date of high-resolution imagery to assess turf health; customer selects satellite acquisition date
- Satellite imagery analysis that may identify turf health issues prior to detection from human eye
- Can include up to two additional layers such as soil nutrient, compaction, or moisture levels
- Mapping service for 18 holes plus practice green
- Includes typical spray areas (i.e., tees, fairways and putting greens)
- Exclusion and boundary area lines
- Multiple rates per boundary area
- Boundary line data collected from on-site equipment
- Positional accuracy of boundary dependent on equipment receiver quality
- Typical resolution within 3-4"

Service Fees:

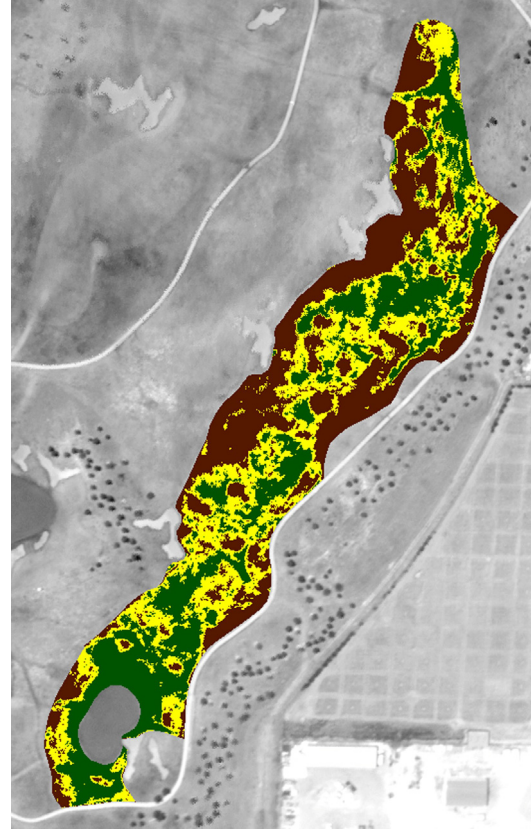
- 18-hole package fee = Please contact us
- Additional services such as rate changes, boundary adjustments, new boundaries, and integration of new data billed hourly

Deliverables:

- High-resolution boundary maps in SHP file form
- KMZ file for easy viewing in Google™ Earth
- Map highlighting relative condition of turf in each boundary area (i.e., healthy to severely stressed)
- Full access to GIS and Spray Technologists during and after the package development

Benefits:

- Spray product savings
- Applying what is needed where it needs to be
- Accurate control of spray areas and rates
- Increased productivity on spray day. Eliminates time driving boundary areas
- More confidence for the spray job being executed correctly



Precision means:

- **Better coverage**
- **Minimized drift**
- **Minimized carry over**
- **Higher productivity**
- **Chemical savings!**

